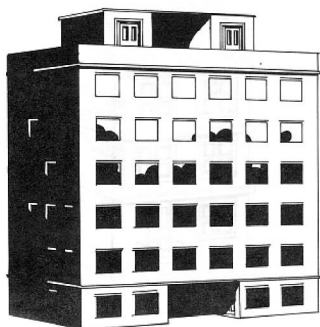
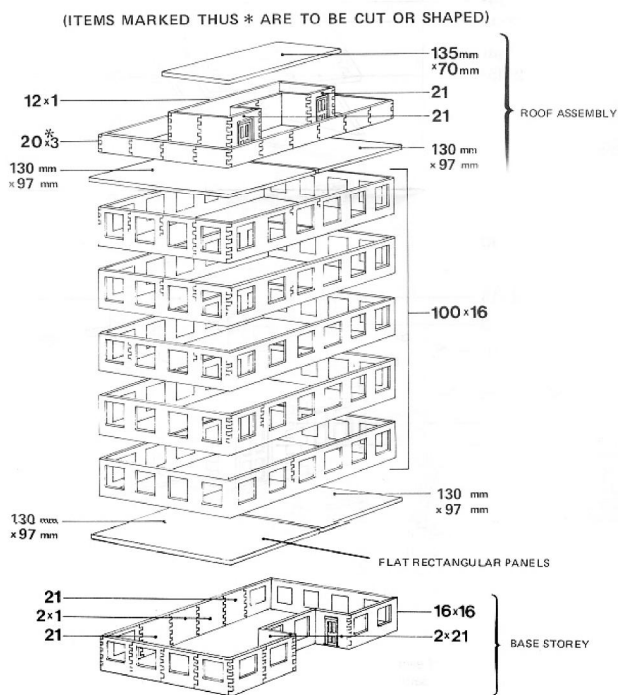


Office Block Plan



Castings Number	1	16	21	3
Quantity Required	14	116	6	20

Where the parts go



MULTI STOREY OFFICE BLOCK.

Before commencing this building, make the five flat rectangular panels to the sizes shown in the exploded drawing. (Use the flat roof former as described in the plan of the Signal Box).

1. Make up the base storey. You will see that most of the castings

used are window No. 16. Remove the glazing bars from all of these windows. These are the bars across the windows. By removing these you will make one large window.

2. Glue two flat rectangular panels together to form a roof and glue this to the base storey.

3. Make up as many storeys as you wish. Strengthen each storey

by glueing triangular castings No. 12 inside each corner before glue-in place.

4. Before adding the roof assembly you should paint the building and fix all plastic windows in position.

5. Make up roof assembly as shown in exploded drawing. Glue to the main building and complete painting.