

# Castle Keep Plans

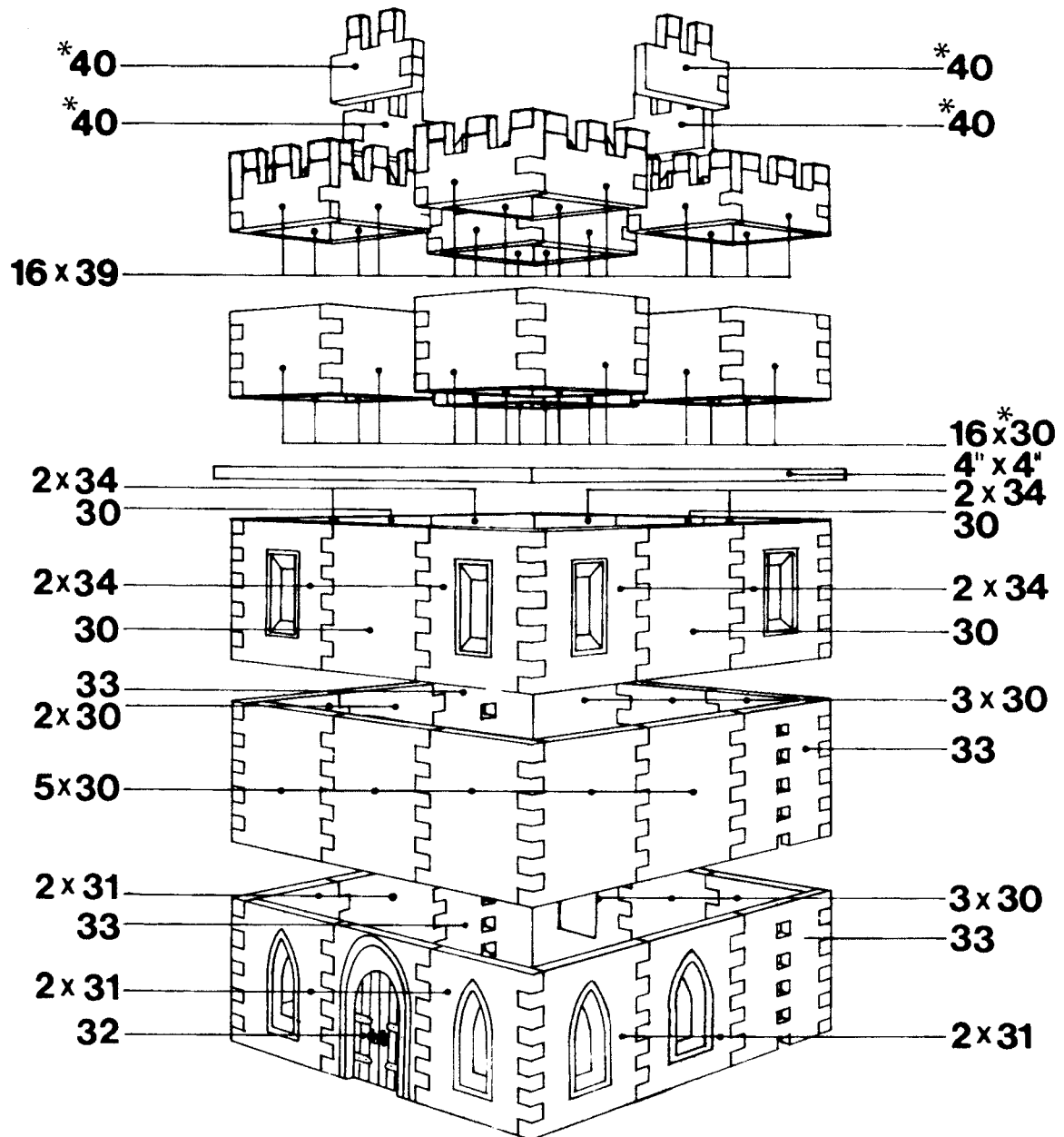
Castle Keep

Castings No	30	31	32	33	34	36	39	40
Qty Required	31	8	1	4	8	4	16	4
2006	S1	S4	S4	S4	S4	S4	S5	S5

## Where the parts go

ITEMS MARKED THUS \* ARE TO BE CUT OR SHAPED

### Stonework Moulds

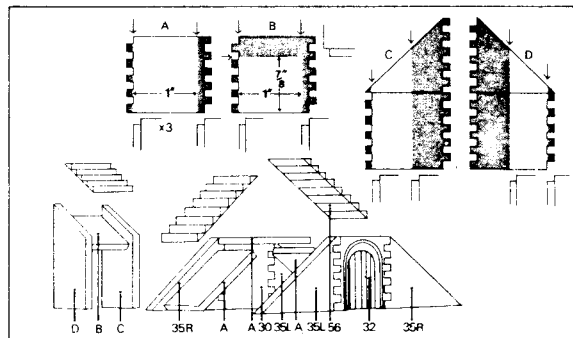
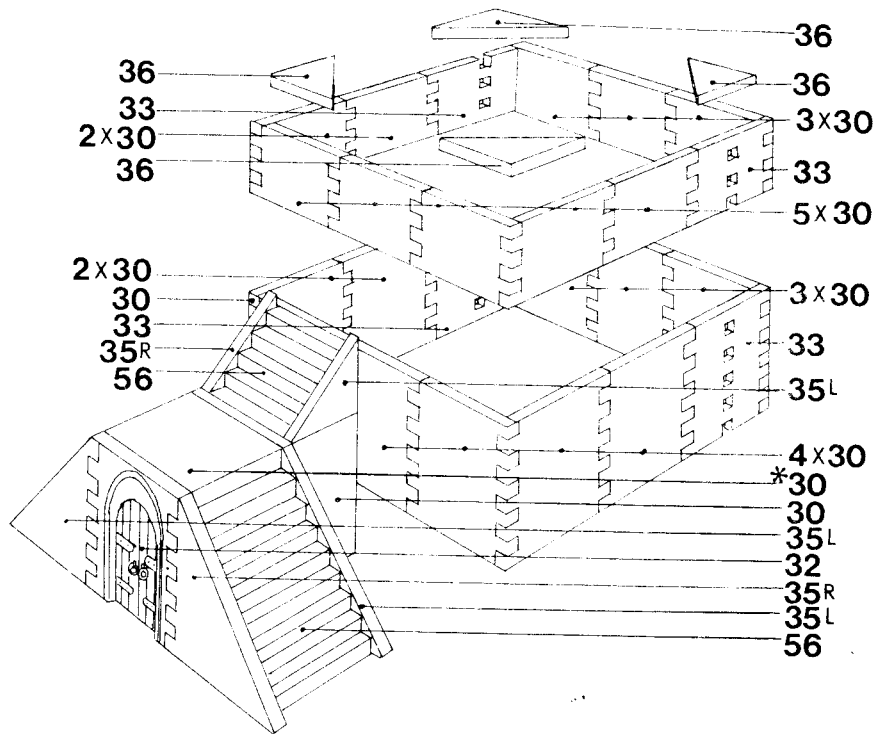


### Stonework Moulds

Castle Keep base Plan

Castings No	30	32	33	35L	35R	36	56
Qty Required	22	1	4	3	3	4	20
2006	S1	S2	S2	S2	S2	S2	S5

## Castle Keep Base Plan



### CASTLE KEEP

You may wish to use the Keep which you have just made to the plans on the left as part of a large castle. In which case you will have to increase the height of the towers. To do this make up the 2 storeys as shown in Fig. 8.

To make a stairway proceed as follows:

1. Cut and shape sections A, B, C and D by removing the shaded areas. (Note that section A is required three times).
2. Take approximately 21 of the triangular castings (56) and glue these to form steps on two of the A panels and the one on the B panel. These pieces should be cut to fit.
3. Glue the B panels as shown, between panels D and C.
4. Make up the back stairway panel using 35L, 30 and 35R.
5. Make up the front stairway panel using 35L, 32 and 35R.
6. Glue the three A panels between the front and back stairway panels, so that there are steps at either end a flat surface on top.
7. Glue the D.B.C. assembly to the Keep beneath the Keep doorway, then glue the remaining stairway section in place. See finished sketch.

### PAINTING

The paints supplied with this set are the basic colours for walls, roofs and brown woodwork. They will not cover any adhesive on the surface. Any adhesive on the surface should be removed by lightly sanding with the sanding sticks provided.

Depending upon the depth of colour you wish to achieve, it may be necessary to apply several coats of paint. The paint applicator is used in the same manner as a paint brush. Using the bristle side of the pad, dip the pad in clean water and rub on the paint disc until the pad is saturated with colour. Paint the building using long even strokes. Allow to dry before applying a second coat.

**Note :** The paint applicator is ideal for large surfaces, but for painting corners or fine details use the small paint brush supplied.

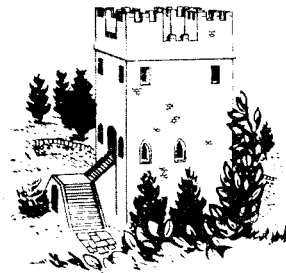
### Special Effects

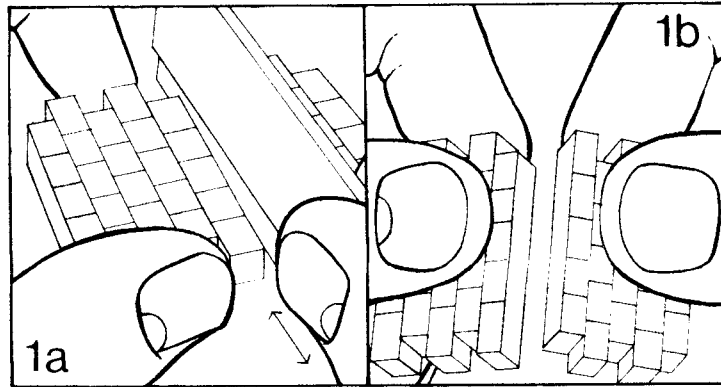
The sponge side of the pad is useful for obtaining special effects, such as highlighting the brick or stone shapes. Saturate the pad with colour then press onto a piece of paper to remove most of the moisture. Rub lightly across the surface of the brick or stonework and with practice you will be able to colour the bricks or stones leaving the mortar between, white.

Should you want the mortar to be a grey colour then apply grey as a first coat and while still wet wipe over the surface with a damp cloth. This will leave the mortar only grey in colour. Leave to dry. When dry paint brick surface, as described in the previous paragraph.

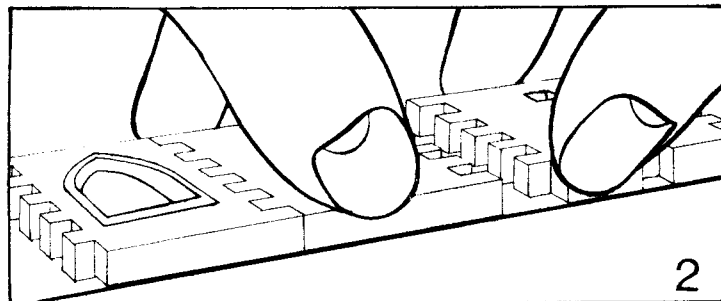
### Other Paints

For the serious modeller, many other paints can be used. Ordinary household emulsions are good and so are poster paints and many of the other types used by artists. Especially recommended are the Humbrol range of paints which are sold by most Model and Toy shops. Their range of matt enamels are ideal for brick, stone and roof surfaces and the gloss enamels are ideal for detail such as doors and windows. Humbrol paints are non-toxic and are inter-mixable.





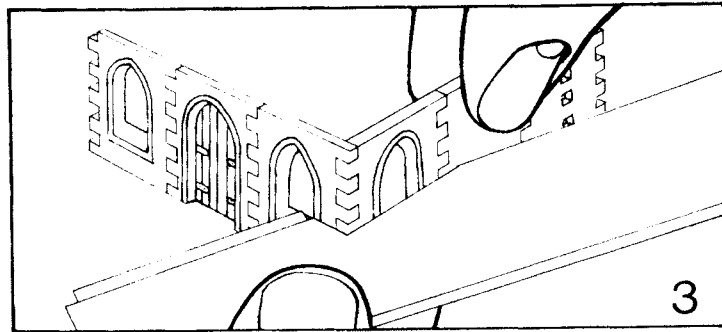
1. Certain castings have to be cut or shaped. When this is necessary, an asterisk \* is placed in front of the shape number on the plan, e.g. \*30. If you require to cut a standard brick No. 30 in half, you should first lay it on a smooth surface with the engraved side up. Use the blade of the multi-purpose tool to score a deep line across the casting at the gap between the 5th and 6th row of stones. See Fig. 1A. Grip the casting firmly and snap. See Fig. 1B. Smooth any rough edges.



2. Select castings 31, 32 and 31. Lay these engraved face down and glue together. See Fig. 2. These castings when glued together form the panel for the front of the bottom storey. Repeat with 31, 30 and 31 for the back wall of the bottom storey.

Select castings 31, 31 and 33 and join them together as shown on the exploded drawing. This forms the wall for the right side. Repeat for left side, noting that this time 33 is jointed to the left side of the panel and that the linkage cut outs are reversed, i.e. on the right side of the building the open end of the line of cut out is to the top. On the left side the open end is to the bottom. This rule also applies to the next storey and with the casting No. 33.

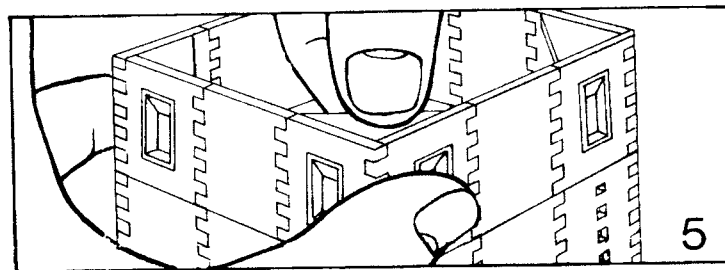
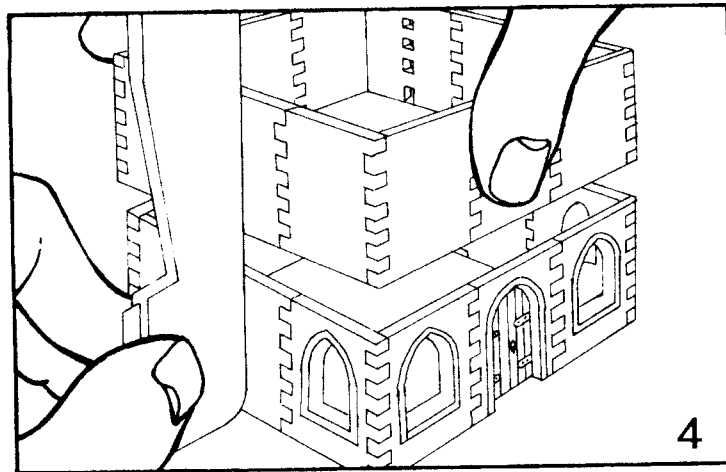
## Assembly of the Keep

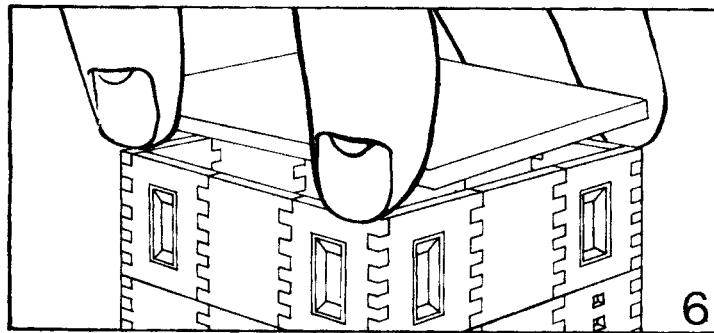


3. Join 4 panels together. Use the multi-purpose tool to check that all corners are square. See Fig. 3.

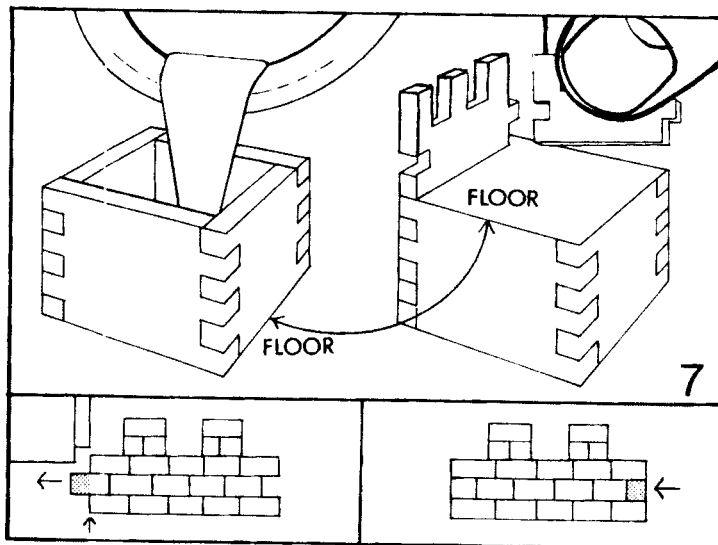
4. Make up the second storey and attach as shown. See Fig. 4.

5. Attach casting 36 inside each corner to strengthen the casting. See Fig. 5.

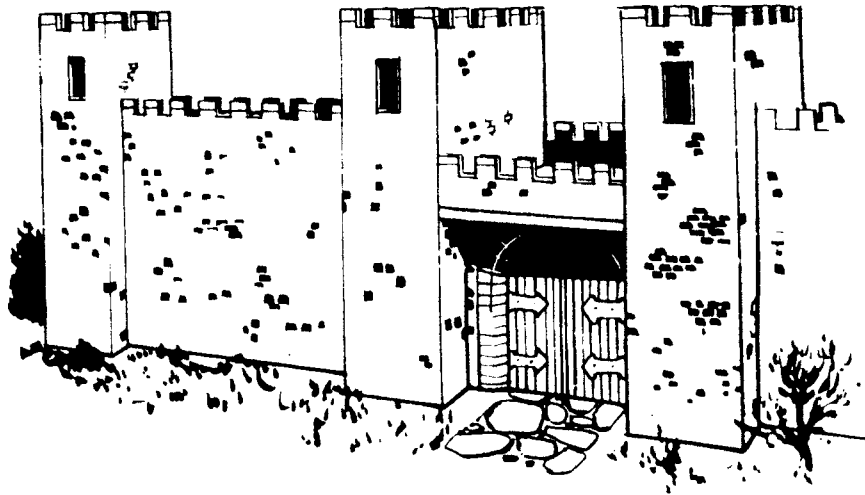




6. Use the flat roof former to make a square the size of the top of the building and glue this in place as shown in Fig. 6. To do this, snap the 4 rods together and adjust to size. Place on a very smooth surface and fill the shape with Linkalite Moulding Compound. Use sufficient moulding compound to completely fill the area required and also enable you to level off the surface with the multi-purpose tool as with the green moulds. After 30 minutes the flat roof former can be removed and the cast panel put aside to dry.



7. Make up 4 small towers as shown in Fig. 7. Place these on a smooth shiny surface and pour Linkalite mixture into each to a depth of about 3mm. Allow to set then turn them with the floor upwards. Attach one tower to each corner of the Keep roof. Finish off by capping with casting 39 then trim casting 40 as shown and glue these in place between the towers.



## Castle Sections



# Linka Plan

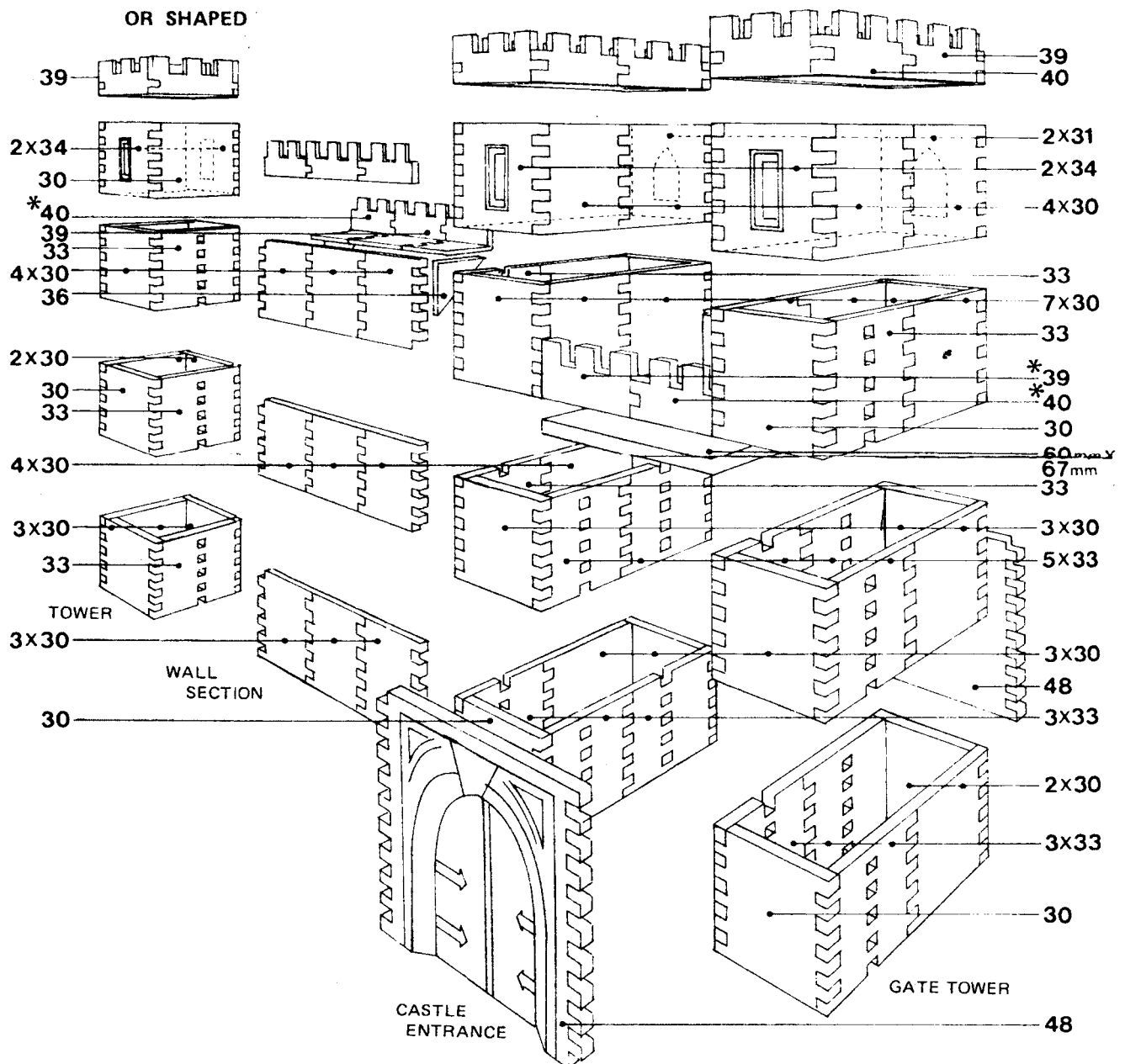
## Castle Sections

Castle Sections #143-C-2

Castings No	30	31	33	34	36	37	39	40	48
Qty Required	49	2	17	4	2	3	12	10	2
2006	S1	S4	S4	S4	S4	S1	S5	S5	S6

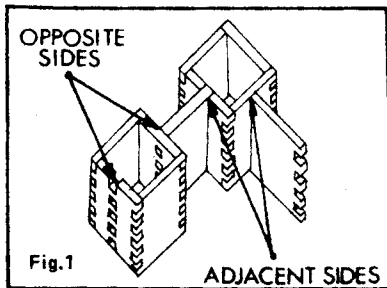
### Where the parts go

ITEMS MARKED THUS \* ARE TO BE CUT  
OR SHAPED



### Castle Sections

Described is how to construct a Castle Entrance, a Wall Section and a Tower. These together with the Keep will enable you to build almost any size and shape of Castle you wish.



### Towers

These are straightforward and can be made as high as you wish. As you will see in fig. 1 the tower can be intermediate in a length of wall or it can be placed at a corner. The castings with the linkage cut-outs must be built into the correct walls and must be turned the correct way.

### Castle Entrance

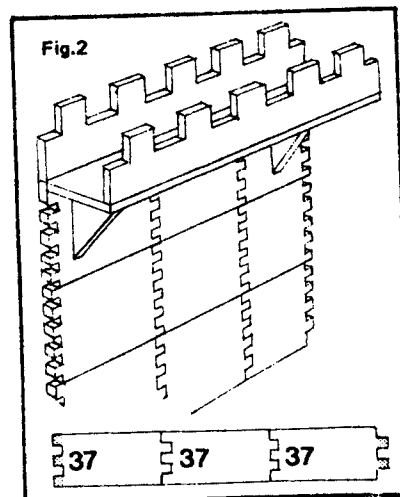
1. Construct the rectangular sections which make up the gate towers. Note carefully how the linkage castings are positioned.
2. Glue two large doorways between the towers. Note that these face outwards and if you wish they can be open.
3. Cast a rectangular panel 60mmx67mm and glue this across the top of the main doors. Glue castellations at the front and back edge of this roof to fill in the gap between the towers.
4. Complete the gate towers one storey at a time and finish off with castellations around the top.

### Round Towers

Round towers can be used instead of square towers. If they are, the linkage teeth on adjoining wall sections should be removed. Make up these towers as shown on the instruction sheet and carve arrow slits while the plaster is still soft.

### Wall Sections

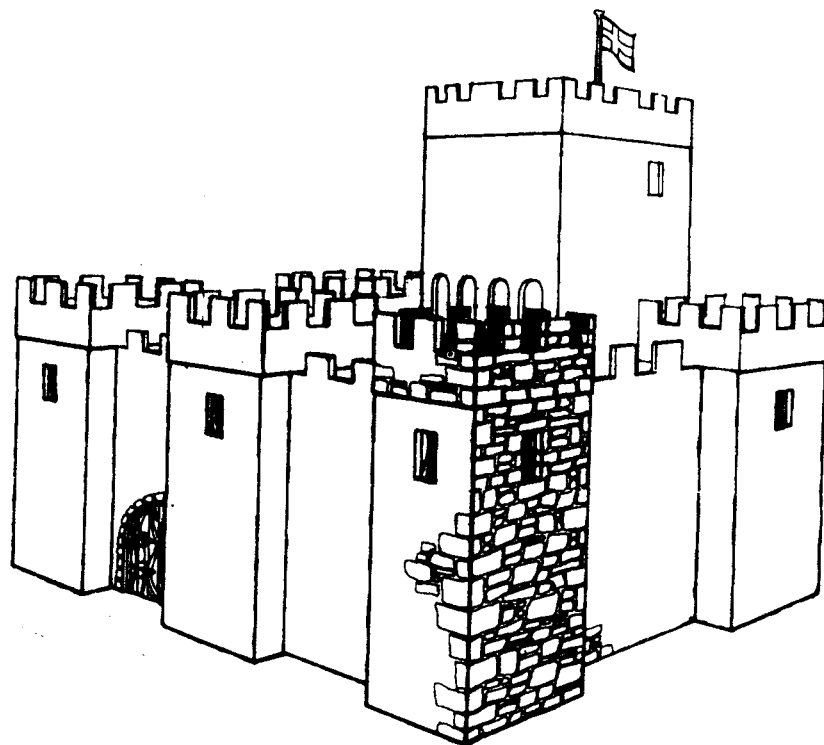
Fig. 2 will give you an idea for a simple wall section. If you wish you can make the wall double so that the inner face is stone also. If you do this the linkage teeth on the ends of the inner wall will have to be removed.



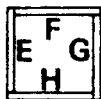
# Linka Plan

English Instructions #144-CS-1 p-1

## Castle Sections



LINKING  
TOWER

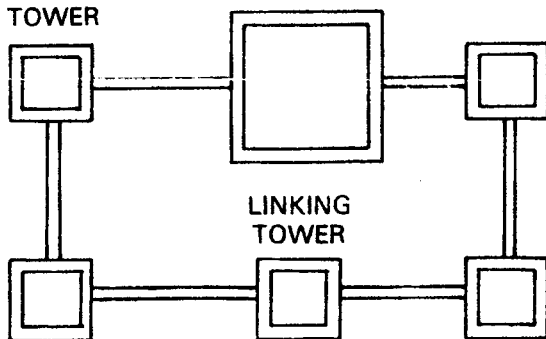


CORNER  
TOWER

Make up towers as shown either for corners or linking. Before adding castellations mold a flat roof as you did for the Keep.

### SUGGESTED LAYOUT

CORNER  
TOWER



This suggested layout is for a small castle and should be constructed on a stout base-board. You can use the various segments to construct almost any shape of castle you wish.

# Linka Plan

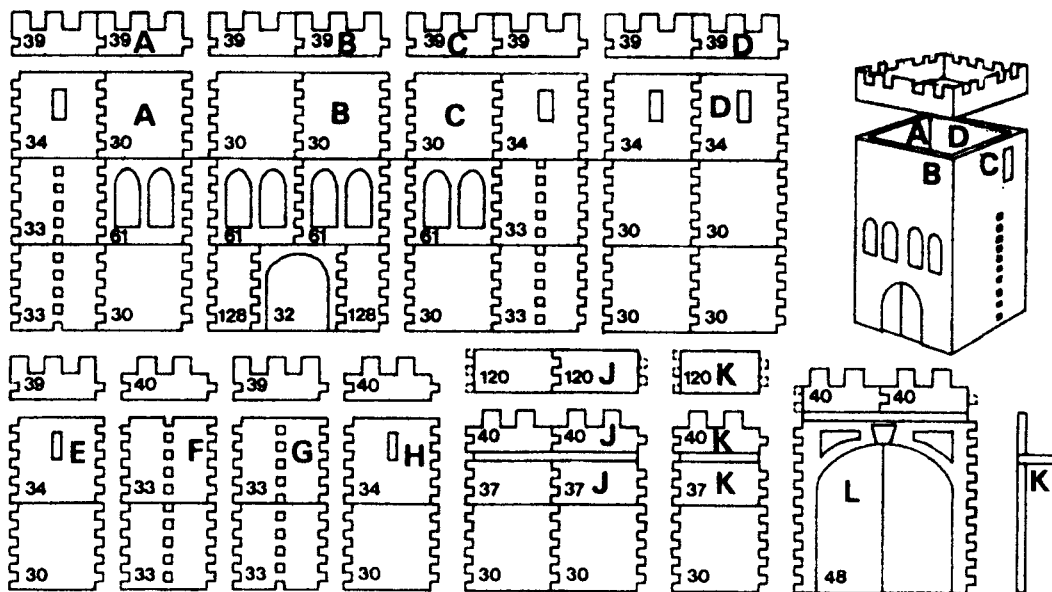
English Instructions #144-CS-1 p-2

## Castle Sections

Castle Sections	Keep							Tower				
Casting No	30	32	33	34	39	61	128	30	33	34	39	40
Quantity	12	3	2	2	11	3	4	4	6	6	5	2
Molds No.	C1	C2	C2	C2	C4	C4	R1	R1	R1	R1	B2	B4
2006	S1	S4	S4	S4	S5	S6	S3	S1	S4	S4	S5	S5

Castle Sections	Wall J				Wall K				DOOR		
Casting No	30	37	40	120	30	37	40	127	40	48	120
Quantity	12	3	2	2	11	3	4	4	6	6	5
Molds No.	C1	C2	C2	C2	C4	C4	R1	R1	R1	R1	B2
2006	S1	S1	S5	S3	S1	S1	S5	S3	S5	S6	S3

The grid above shows the number of castings required for each individual segment of the castle and should be multiplied by the total number of each segment required. The height of any segment can be increased by adding a row of no. 30 castings under the existing top course.



Construct the Keep as shown. It is essential that castings no. 33 are positioned correctly so that other sections will interlock. Before adding castellations a flat roof should be molded using the method given in the plans for the Boilerhouse.

When constructing wall sections J and K and doorway L, the flat walkway should be glued in place before the castellations are added. See sketch on left.

Owners of Linka Set No. 8425 have the components for making round towers. If you are going to use them the linkage teeth should be removed from adjoining wall sections and a butt joint made.